



Safe Work Practices in a Biosafety Cabinet



Do Not Confuse Biosafety Cabinets with Laminar Flow Cabinets

Biosafety and laminar flow cabinets may look alike, but only biosafety cabinets protect the operator. Always check the cabinet label before use.



Do Not Use the Cabinet for Agents of Extreme Hazard

Biosafety cabinets are not designed for handling chemicals, flammable, or explosive materials.



Do Not Operate the Cabinet If Any of the Alarms are Activated

Call your Local Representative for immediate service.



A Bunsen Burner Should Not Be Used

The resulting buoyancy effects will affect cabinet airflow and containment. When absolutely necessary, low pilot light type electric burners may be used.



Do Not Use the Cabinet as a Storage Area

Overloading the cabinet with unnecessary items can affect cabinet airflow and containment.



Follow cabinet placement recommendations

Follow cabinet placement guidelines-external airflow from doors, traffic, windows, or AC vents can compromise containment.



Avoid switching the blower on & off during work. Let it run continuously or keep it in standby mode

To maintain the airflow barrier and prevent contaminants from escaping.



Minimize Disturbances to Airflow Barrier

Work in a controlled and steady manner, avoiding rapid movements.



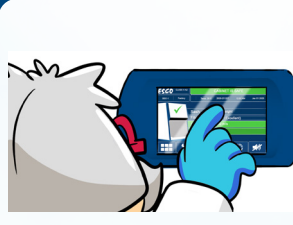
The Cabinet Must Be Certified Annually

This ensures airflow and containment remain safe. Re-certify the cabinet after relocation to check for filter damage.



Observe Surface Decontamination

Clean after each use. Avoid bleach/chorine/Spor-Klenz. If used, wipe with 70% IPA. UV lamps don't replace cleaning.



Allow for Purge Cycles

Leave the blower on before and after use to purge the work zone of any contaminants.



Observe Correct Sash Opening Height

Always set the sash to the work height when working in the cabinet.



Only Trained Personnel Should Use the Cabinet

Access control provisions (key switch and/or password protection feature) are standard features on most Esco cabinets.



Wear Proper Work Attire

Wearing a lab coat (to protect the operator from splashes) as well as double gloving (over the cuffs) should be practiced.



Work Within the Safe Areas

DO NOT obstruct any of the air grilles in the front or back of the work zone. Work as deep into the work zone as possible.



Observe Proper Aseptic Technique

Plan ahead and place all items in the cabinet before use to avoid disrupting airflow. Work from clean to dirty, keeping contaminated and non-contaminated items separate.

